

---

## RetroUI Pro™ v3.1.6 Enterprise Deployment Guide

# RetroUI™

- Understanding, and planning for the deployment of Windows 8 based PCs in the enterprise. This tool allows a network administrator to configure the settings for RetroUI and configure pinned favorites, and save these settings as the defaults, so that multiple users on a PC inherit the same customized settings and pinned favorites.

# Abstract

When deploying multiple PCs it is often desirable to configure a base-image and then clone that image to multiple PCs. Similarly, on a single PC, it is desirable to configure a commonly configured profile so that all users inherit the same user experience. The scope of this document is limited to using RetroUI Pro in an enterprise situation where you want to have multiple users inherit the same basic settings and pinned favorites for RetroUI Pro.

This document describes in detail the **RetroUI Enterprise Deployment Tool**, which is available to business license holders of RetroUI Pro.

Using this tool, a network administrator can easily configure RetroUI Pro and run the deployment tool, which allows multiple users on the system to inherit the same RetroUI settings and pinned favorites. RetroUI is designed to allow the pinned favorites in the Start menu and in TabletView to be 'Locked'. When the settings are locked, users cannot modify the start menu settings and cannot edit or alter the pinned favorites. If you consider computers in a kiosk situation or in a library, it would be desirable for a user to not be able to edit the settings. RetroUI supports this directly.

By default, Windows 8 plays a 60-second animation the first time a user logs on to the PC. In this animation, it explains the concepts of Hotcorners, and gestures. In Enterprise settings where users commonly login to multiple PCs, this behavior wastes time and is undesirable. RetroUI Pro v3.1.6, and the Enterprise Deployment Tool now have built-in technology that allow the logon animation to be turned-off for all new users who logon to the PC. For stand-alone users, simply running LogonAnimationTool.exe, allows this logon animation to be enabled or disabled. This same functionality is built-in to the Enterprise Deployment Tool.

# Using the RetroUI Enterprise Deployment Tool

The **RetroUI Enterprise Deployment Tool**, which is available to business, Government and Educational license holders of RetroUI Pro. It is not available and cannot be used on the personal, non-business users version of RetroUI Pro.

Using this tool, a network administrator can easily configure RetroUI Pro and run the deployment tool, which allows multiple users on the system to inherit the same RetroUI settings and pinned favorites.

## Understanding the 'Locked' Start Menu State:

RetroUI is designed to allow the pinned favorites in the Start menu and in TabletView to be 'Locked'. When the settings are locked, users cannot modify the start menu settings and cannot edit or alter the pinned favorites. If you consider computers in a kiosk situation, in a library or similar situation, it would be desirable for a user to not be able to edit the settings. RetroUI supports this directly.

When the configuration of RetroUI is in a locked state, the following properties are unavailable to users:

- Users cannot right click the Start button or TabletView button to open the settings application
- Users cannot right click within the pinned-favorites within the Start menu, and therefore cannot edit the pinned favorite's setup by the network administrator.

## General options available with the RetroUI Enterprise Deployment Tool:

- Allows the Administrator to very easily customize the settings for RetroUI Pro under their user account, and allows these settings to be saved in a way that allows them to be inherited by all new users on the computer.
- Allows the Administrator to very easily customize the pinned favorites in the Start menu and in TabletView and allows these pinned favorites to be saved in a way that allows them to be inherited by all new users on the computer.
- Allows the user to deploy the pinned favorites as 'Locked' or 'Unlocked'. This determines if the end-user will have the ability to edit the pinned-favorites, and access the RetroUI Settings application.
- Allows the Administrator the option of easily removing settings for RetroUI which have been inherited by existing users on the computer. This allows the administrator to allow users to retain their existing RetroUI settings and favorites or allows them to be bulk-erased so that all users will inherit the new settings.
- Allows the Administrator the option of easily disabling the Windows 8 Logon tutorial that normally plays whenever a user first logs on to the computer.
- Resets a flag in the .XML file which will prompt each new user to activate the Start button automatically if the Administrator chooses to deploy the policy to all new users.
- Intelligently removes shortcuts to RetroUI software activation and deactivation for all users.

- Intelligently removes shortcuts to the RetroUI configuration utility for all users if the Administrator chooses to distribute 'locked' settings to all users.
- In addition to allowing the administrator to deploy custom defaults, it also allows the administrator to restore default RetroUI settings so that all users can re-inherit the default settings if desired.

To use the RetroUI Enterprise Deployment Tool, you need to download the copy the RetroUI Enterprise Deployment Tool , and copy either the x86 or x64 file to the Thinix directory:

On 64-bit systems:

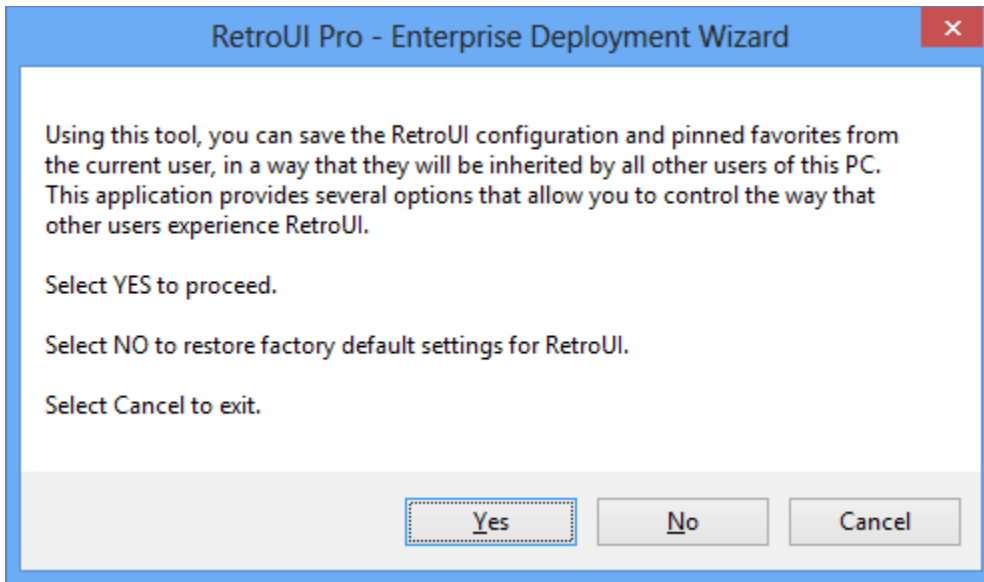
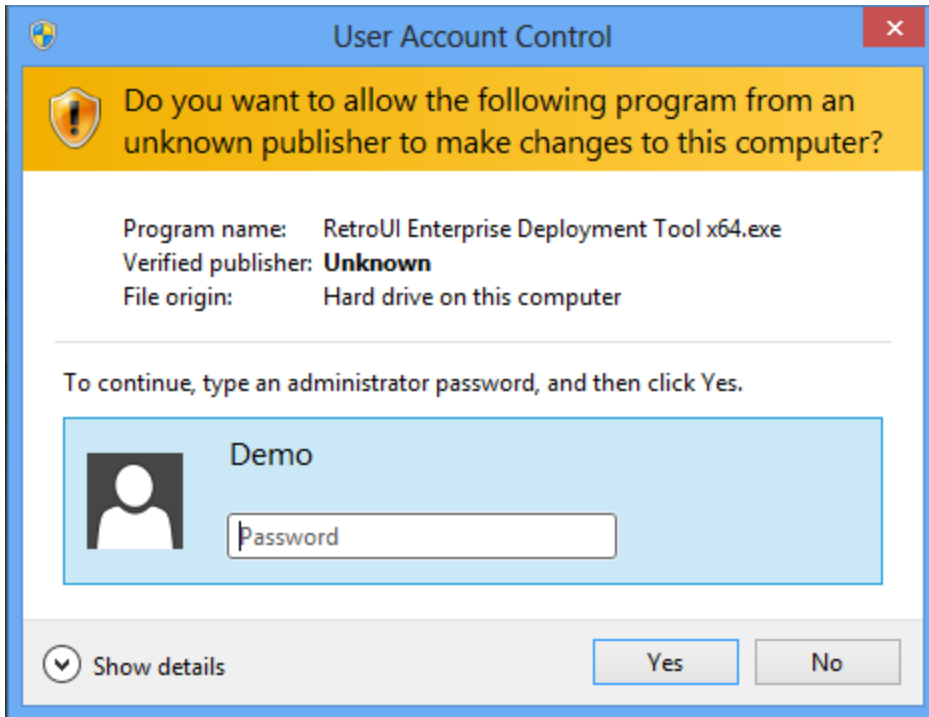
Copy RetroUI Enterprise Deployment Tool x64.exe to  
%programfiles%\Thinix\RetroUI\ RetroUI Enterprise Deployment Tool x64.exe

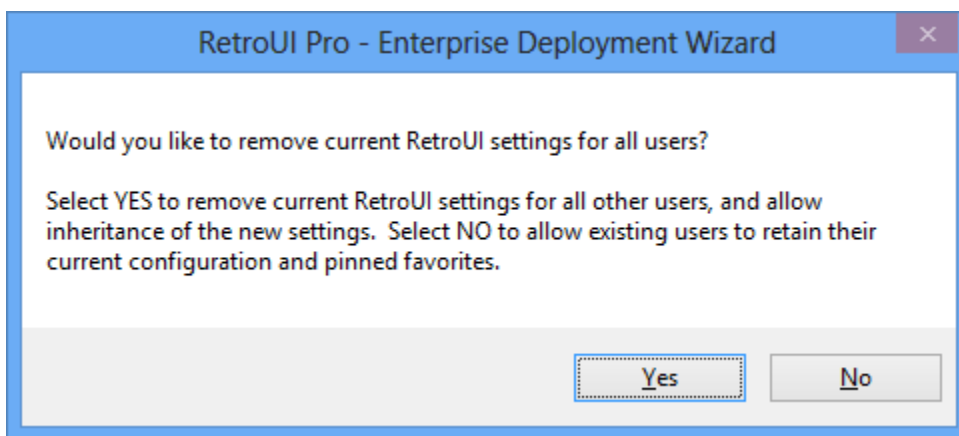
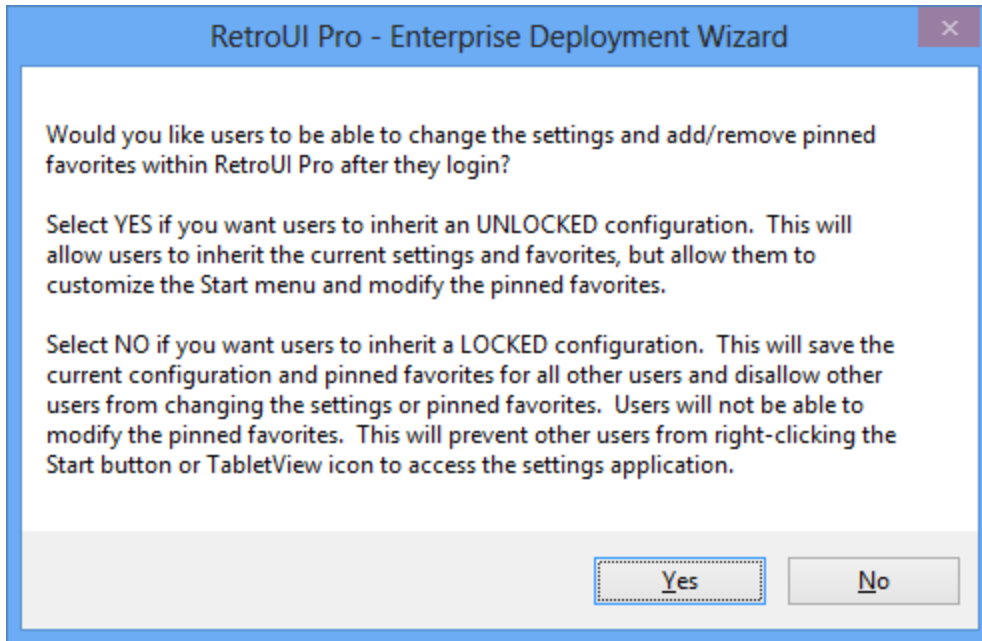
On 32-bit systems:

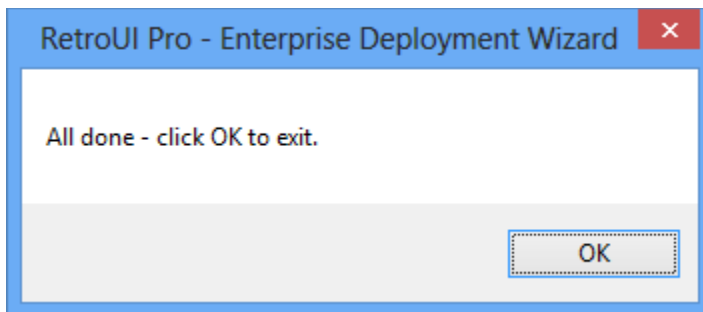
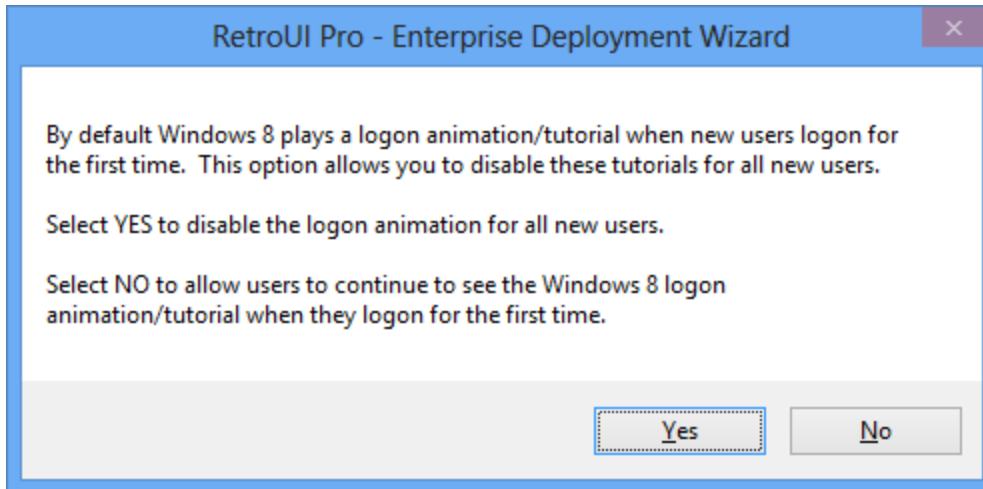
Copy RetroUI Enterprise Deployment Tool x86.exe to  
%programfiles%\Thinix\RetroUI\ RetroUI Enterprise Deployment Tool x86.exe

#### Using the Tool:

1. Install RetroUI Pro v3.1.6
2. Login to an account with Administrative rights on the PC.
3. Customize the settings for RetroUI Pro by running the Settings application.
4. Edit and organize the Pinned favorites in the Start menu.
5. Edit and organize the Pinned favorites in TabletView.
6. Open Windows Explorer to the folder where RetroUI is installed:  
%programfiles%\Thinix\RetroUI\
7. You will now run RetroUI Enterprise Deployment Tool x64.exe or RetroUI Enterprise Deployment Tool x86.exe, this must be done while you are logged into the account where you have customized the settings, and which has Administrative rights.
8. Follow the prompts:
  - a. You must first answer YES to allow the elevated process to run.
  - b. Follow other instructions as indicated by the application.







## Known Issues:

When using the RetroUI Enterprise Deployment tool with RetroUI version 3.1.5 there is one small issue. After the RetroUI settings are saved and distributed to users:

- When the user logs in for the very first time, the icon for Internet Explorer is not displayed in the pinned favorites or in TabletView. After this user logs off and logs back in, the issue is corrected and the icon is displayed. The issue is cosmetic and does not affect anything other than the fact that after the first login the Internet Explorer icon is not shown.